

# SPECIFIED GAS EMITTERS REGULATION

## QUANTIFICATION PROTOCOL FOR REDUCING SLAUGHTER AGE OF CATTLE

**AUGUST 2008**

**Version 1.2**

**Alberta**

## **Disclaimer:**

The information provided in this document is intended as guidance only and is subject to revisions as learnings and new information comes forward as part of a commitment to continuous improvement. This document is not a substitute for the law. Please consult the *Specified Gas Emitters Regulation* and the legislation for all purposes of interpreting and applying the law. In the event that there is a difference between this document and the *Specified Gas Emitters Regulation* or legislation, the *Specified Gas Emitters Regulation* or the legislation prevail.

All Quantification Protocols approved under the *Specified Gas Emitters Regulation* are subject to periodic review as deemed necessary by the Department, and will be re-examined at a minimum of every 5 years from the original publication date to ensure methodologies and science continue to reflect best-available knowledge and best practices. This 5-year review will not impact the credit duration stream of projects that have been initiated under previous versions of the protocol. Any updates to protocols occurring as a result of the 5-year and/or other reviews will apply at the end of the first credit duration period for applicable project extensions.

Any comments, questions, or suggestions regarding the content of this document may be directed to:

**Alberta Environment**  
Climate Change Policy Unit  
12th Floor, 10025 – 106 Street  
Edmonton, Alberta, T5J 1G4  
E-mail: [AENV.GHG@gov.ab.ca](mailto:AENV.GHG@gov.ab.ca)

**Date of Publication: September 2007**

ISBN: 978-0-7785-7575-7 (Printed)  
ISBN: 978-0-7785-7576-4 (On-line)

Copyright in this publication, regardless of format, belongs to Her Majesty the Queen in right of the Province of Alberta. Reproduction of this publication, in whole or in part, regardless of purpose, requires the prior written permission of Alberta Environment.

© Her Majesty the Queen in right of the Province of Alberta, 2008

## Table of Contents

<b>Table of Contents</b> .....	<b>ii</b>
<b>List of Figures</b> .....	<b>ii</b>
<b>List of Tables</b> .....	<b>ii</b>
<b>1.0 Project and Methodology Scope and Description</b> .....	<b>1</b>
1.1 Protocol Scope and Description.....	1
1.2 Glossary of New Terms .....	5
<b>2.0 Quantification Development and Justification</b> .....	<b>5</b>
2.1 Identification of Sources and Sinks (SS's) for the Project.....	5
2.2 Identification of Baseline.....	10
2.3 Identification of SS's for the Baseline .....	10
2.4 Selection of Relevant Project and Baseline SS's.....	15
2.5 Quantification of Reductions, Removals and Reversals of Relevant SS's .....	19
2.5.1 Quantification Approaches .....	19
2.5.2 Contingent Data Approaches .....	22
2.6 Management of Data Quality.....	22
2.6.1 Record Keeping .....	22
2.6.1 Quality Assurance/Quality Control (QA/QC) .....	22
<b>APPENDIX A:</b> .....	<b>25</b>
Relevant Emission Factors.....	25

## List of Figures

FIGURE 1.1	Process Flow Diagram for Project Condition	2
FIGURE 1.2	Process Flow Diagram for Baseline Condition	3
FIGURE 2.1	Project Element Life Cycle Chart	6
FIGURE 2.2	Baseline Element Life Cycle Chart	12

## List of Tables

TABLE 2.1	Project SS's	7
TABLE 2.2	Baseline SS's	13
TABLE 2.3	Comparison of SS's	17
TABLE 2.4	Quantification Procedures	21
TABLE 2.5	Contingent Data Collection Procedures	24

## 1.0 Project and Methodology Scope and Description

The opportunity for generating carbon offsets with this protocol arises from the direct and indirect reductions of greenhouse gas (GHG) emissions from reducing the slaughter age of cattle throughout the beef production supply chain.

This quantification protocol is written for the beef farm operator or project developer. Some familiarity with, or general understanding of, the operation of a beef farm and associated practices is expected.

### 1.1 Protocol Scope and Description

This protocol quantifies enteric methane emissions from calves, cows and bulls; and emissions from manure handling, storage and application. **FIGURE 1.1** offers a process flow diagram for a typical project.

#### **Protocol Approach**

The Beef Slaughter Age Protocol does not prescribe the slaughter age or feeding practices for beef production. Rather, this protocol serves as a generic ‘recipe’ for project proponents to follow in order to meet the measurement, monitoring and GHG quantification requirements. The Beef Slaughter Age Protocol quantifies emissions reductions on the basis of the mass of beef produced. Thus, the starting point for all quantification is the number and weight of cattle produced in the project.

In Canada, beef cattle are typically slaughtered in the range of 18 months of age, with a range of between 14 and 21 months. The baseline condition for projects applying this protocol is defined as the operating conditions at the project farm prior to the change in practices that result in the reduction in the slaughter age. The baseline condition would be defined as the average slaughter age at the project proponent’s beef production operation for the three years prior to project implementation. **FIGURE 1.2** offers a process flow diagram for a typical baseline configuration. Actual cattle birth dates must be registered with the Canadian Cattle Identification Agency (CCIA) and/or an Alberta registry, confirmed by operational records, for the purpose of this protocol.

The boundary of the Beef Slaughter Age Protocol encompasses the pasture and feedlot barn where the cattle are raised and fed, the facility where manure is stored, and the land where the manure is spread. The project may include a number of sites, and a variety of enterprises, but all project farms will address the activities within the boundary of the Beef Slaughter Age Protocol.

#### **Protocol Applicability**

To demonstrate that a project meets the requirements under this Protocol, the project developer must supply sufficient evidence to demonstrate that:

1. Feeding practices used by the farms are materially consistent with those described in **APPENDIX A** as confirmed by an affirmation from the project developer;
2. All qualifying cattle to be included under this protocol must have actual birth dates registered with the Canadian Cattle Identification Agency (CCIA) and/or an Alberta registry, confirmed by operational records. The date of first calf born or season of calving for a group is not acceptable for the purposes of this protocol;
3. All farms in the project are currently storing manure and applying manure or custom applying manure to land as confirmed by an affirmation from the project developer;
4. All farms in the project can demonstrate a change in practice in terms of the age of slaughter of their cattle confirmed by operational records; and
5. The quantification of reductions achieved by the project is based on actual measurement and monitoring (except where indicated in this protocol) as indicated by the proper application of this protocol.

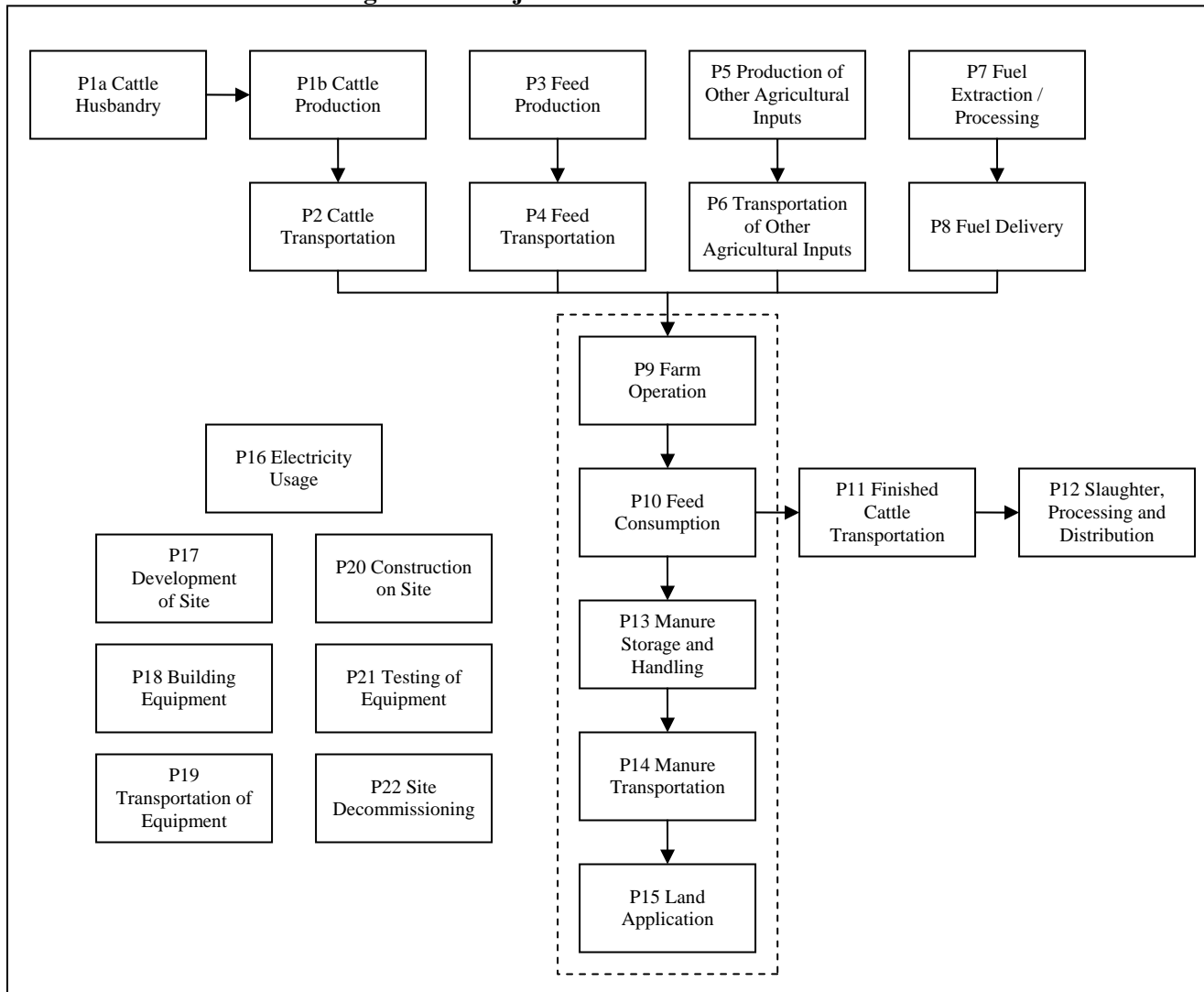
### **Protocol Flexibility**

Flexibility in applying the quantification protocol is provided to project developers in two ways:

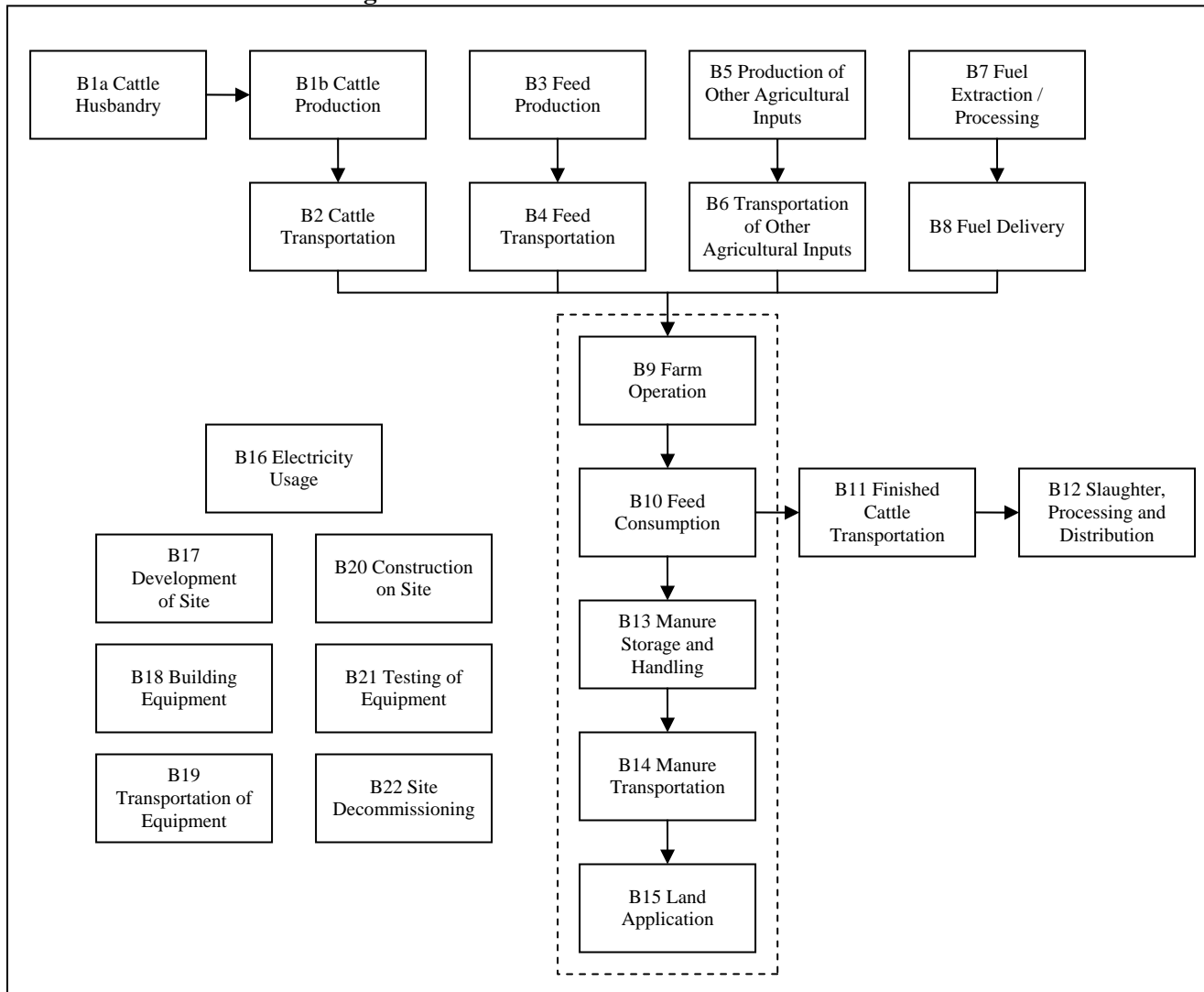
1. Farms that do not have three years of baseline data as per slaughter age may establish a baseline condition based on a combination of available data and industry practise in their region or operation;
2. Farms where the time to slaughter varies across groups of animals, these animals can be grouped in discreet units and tracked individually. In this case, the baseline condition may need to be calculated relative to the group exhibiting a historic longest time to slaughter;
3. Site specific emission factors may be substituted for the generic emission factors indicated in this protocol document. The methodology for generation of these emission factors must ensure reasonable accuracy; and
4. Farms using feeding cycles materially different from those outlined in **APPENDIX A** may calculate custom emissions factors based on their particular feeding cycles using a relevant method, such as the IPCC (tier 2); or CowBytes<sup>TM</sup>.

If applicable, the proponent must indicate and justify why flexibility provisions have been used.

**FIGURE 1.1: Process Flow Diagram for Project Condition**



**FIGURE 1.2: Process Flow Diagram for Baseline Condition**



## 1.2 Glossary of New Terms

Enteric Emissions:	Emissions of methane from the cattle as part of the digestion of the feed materials.
Land Application:	The beneficial use of the agricultural material and/or digestate applied to cropland based upon crop needs and the composition of agricultural material as a source of soil amendment and/or fertility.

## 2.0 Quantification Development and Justification

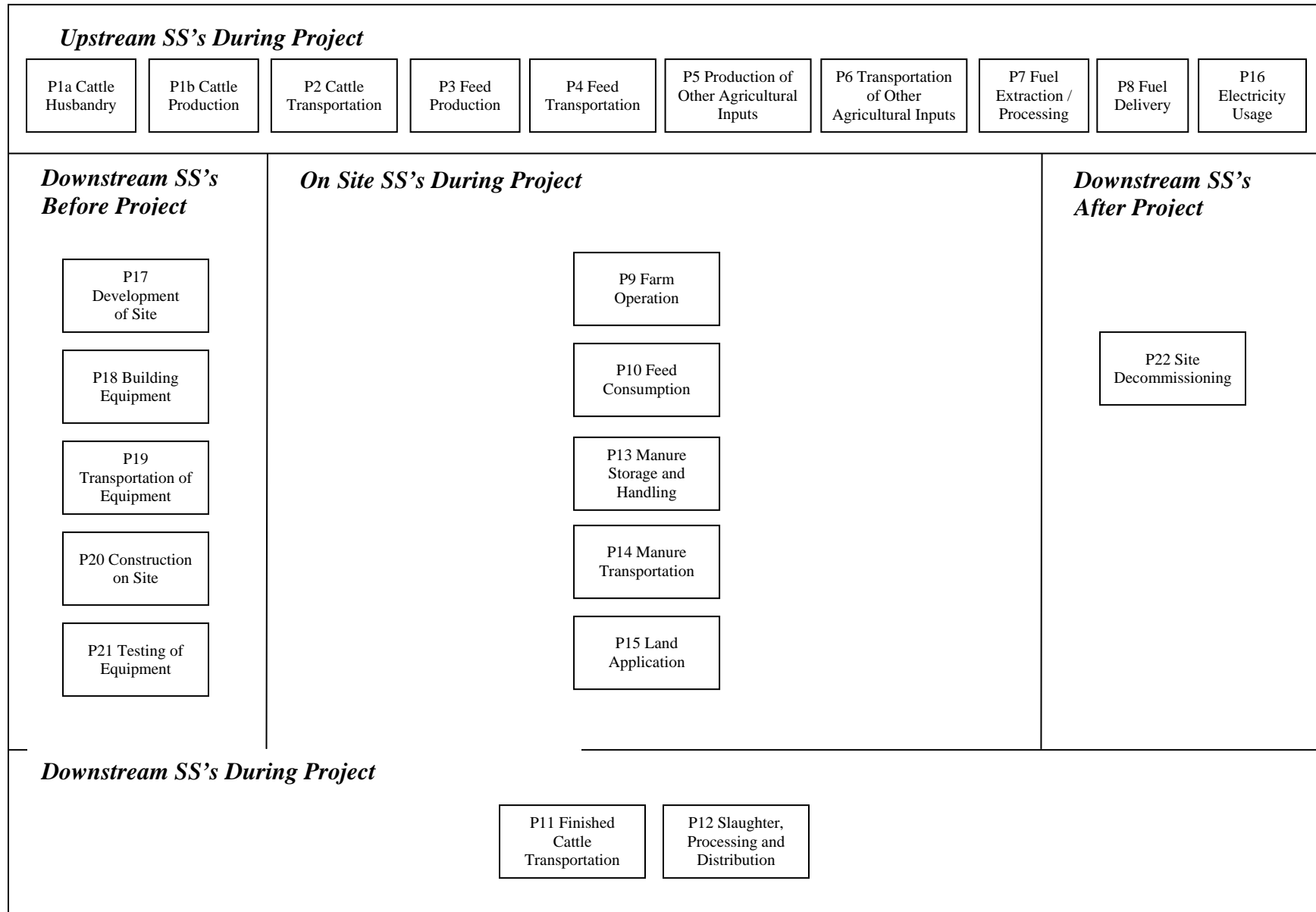
The following sections outline the quantification development and justification.

### 2.1 Identification of Sources and Sinks (SS's) for the Project

SS's were identified for the project by reviewing the seed documents and relevant process flow diagram developed by the Beef Technical Working Group (BTWG) under the National Offset Quantification Team (NOQT). This process confirmed that the SS's in the process flow diagrams covered the full scope of eligible project activities under the protocol.

Based on the process flow diagrams provided in **FIGURE 1.1**, the project SS's were organized into life cycle categories in **FIGURE 2.1**. Descriptions of each of the SS's and their classification as controlled, related or affected are provided in **TABLE 2.1**.

**FIGURE 2.1: Project Element Life Cycle Chart**



**TABLE 2.1: Project SS's**

1. SS	2. Description	3. Controlled, Related or Affected
<b>Upstream SS's during Project Operation</b>		
P1a Cattle Husbandry	Cattle husbandry may include insemination and all other practices prior to the birth of the calf. Quantities and types for each of the energy inputs would be contemplated to evaluate functional equivalence with the baseline condition.	Related
P1b Cattle Production	Cattle production may include raising calves, including time in pasture, that are input to the enterprise. Feed consumption includes the enteric emissions from the cattle and related manure production. The feed composition would need to be tracked to ensure functional equivalence with the baseline condition. Length of each type of feeding cycle would need to be tracked.	Related
P2 Cattle Transportation	Cattle may be transported to the project site by truck, barge and/or train. The related energy inputs for fuelling this equipment are captured under this SS, for the purposes of calculating the resulting greenhouse gas emissions. Type of equipment, number of loads and distance travelled would be used to evaluate functional equivalence with the baseline condition.	Related
P3 Feed Production	Feed may be produced from agricultural materials and amendments. The processing of the feed may include a number of chemical and mechanical amendment processes. This requires several energy inputs such as natural gas, diesel and electricity. Quantities and types for each of the energy inputs would be tracked to evaluate functional equivalence with the baseline condition.	Related
P4 Feed Transportation	Feed may be transported to the project site by truck, barge and/or train. The related energy inputs for fuelling this equipment are captured under this SS, for the purposes of calculating the resulting greenhouse gas emissions. Type of equipment, number of loads and distance travelled would be used to evaluate functional equivalence with the baseline condition.	Related
P5 Production of Other Agricultural Inputs	Other agricultural inputs, such as feed supplements, bedding, etc., may be produced from agricultural materials and amendments. The processing of these inputs may include a number of chemical, mechanical and amendment processes. This requires several energy inputs such as natural gas, diesel and electricity. Quantities and types for each of the energy inputs would be tracked to evaluate functional equivalence with the baseline condition.	Related
P6 Transportation of Other Agricultural Inputs	Feed may be transported to the project site by truck, barge and/or train. The related energy inputs for fuelling this equipment are captured under this SS, for the purposes of calculating the resulting greenhouse gas emissions. Type of equipment, number of loads and distance travelled would be used to evaluate functional equivalence with the baseline condition.	Related

P7 Fuel Extraction and Processing	Each of the fuels used throughout the on-site component of the project will need to be sourced and processed. This will allow for the calculation of the greenhouse gas emissions from the various processes involved in the production, refinement and storage of the fuels. The total volumes of fuel for each of the on-site SS's are considered under this SS. Volumes and types of fuels are the important characteristics to be tracked.	Related
P8 Fuel Delivery	Each of the fuels used throughout the on-site component of the project will need to be transported to the site. This may include shipments by tanker or by pipeline, resulting in the emissions of greenhouse gases. It is reasonable to exclude fuel sourced by taking equipment to an existing commercial fuelling station as the fuel used to take the equipment to the site is captured under other SS's and there is no other delivery.	Related
P16 Electricity Usage	Electricity may be required for operating the facility. This power may be sourced either from internal generation, connected facilities or the local electricity grid. Metering of electricity may be netted in terms of the power going to and from the grid. Quantity and source of power are the important characteristics to be tracked as they directly relate to the quantity of greenhouse gas emissions.	Related
<b>Onsite SS's during Project Operation</b>		
P9 Farm Operation	Greenhouse gas emissions may occur that are associated with the operation and maintenance of the cattle feeding facility operations. This may include running vehicles and facilities at the project site for the distribution of the various inputs. Quantities and types for each of the energy inputs would be tracked.	Controlled
P10 Feed Consumption	Feed consumption includes the enteric emissions from the cattle and related manure production. The feed composition would need to be tracked to ensure functional equivalence with the baseline condition. Length of each type of feeding cycle would need to be tracked.	Controlled
P13 Manure Storage and Handling	Greenhouse gas emissions can result from the operation of manure storage and handling facilities. This will include emissions from energy use, and from the emissions of methane and nitrous oxide from the manure being stored and processed. Quantities and types for each of the energy inputs would be tracked. Quantities, duration and conditions would also need to be tracked.	Controlled
P14 Manure Transportation	Manure may need to be transported to the field for land application from storage. Transportation equipment would be fuelled by diesel, gas or natural gas. Quantities for each of the energy inputs would be contemplated to evaluate functional equivalence with the baseline condition.	Controlled
P15 Land Application	Manure may then be land applied. This may require the use of heavy equipment and mechanical systems. This equipment would be fuelled by diesel, gas, or natural gas resulting in GHG emissions. Other fuels may also be used in some rare cases. Quantities for each of the energy inputs would be contemplated to evaluate functional equivalence with the baseline condition.	Controlled
<b>Downstream SS's during Project Operation</b>		

P11 Finished Cattle Transportation	Finished cattle may be transported from the project site by truck, barge and/or train. The related energy inputs for fuelling this equipment are captured under this SS, for the purposes of calculating the resulting greenhouse gas emissions. Type of equipment, number of loads and distance travelled would need to be tracked.	Related
P12 Slaughter, Processing and Distribution	Greenhouse gas emissions may occur that are associated with the slaughter, processing and distribution components downstream of the cattle finishing facility operations. This may include running vehicles and facilities at other sites. Quantities and types for each of the energy inputs would be tracked.	Related
<b>Other</b>		
P17 Development of Site	The site of the facility may need to be developed. This could include civil infrastructure such as access to electricity, gas and water supply, as well as sewer etc. This may also include clearing, grading, building access roads, etc. There will also need to be some building of structures for the facility such as storage areas, storm water drainage, offices, vent stacks, firefighting water storage lagoons, etc., as well as structures to enclose, support and house the equipment. Greenhouse gas emissions would be primarily attributed to the use of fossil fuels and electricity used to power equipment required to develop the site such as graders, backhoes, trenching machines, etc.	Related
P18 Building Equipment	Equipment may need to be built either on-site or off-site. This includes all of the components of the storage, handling, processing, combustion, air quality control, system control and safety systems. These may be sourced as pre-made standard equipment or custom built to specification. Greenhouse gas emissions would be primarily attributed to the use of fossil fuels and electricity used to power equipment for the extraction of the raw materials, processing, fabricating and assembly.	Related
P19 Transportation of Equipment	Equipment built off-site and the materials to build equipment on-site, will all need to be delivered to the site. Transportation may be completed by truck, barge and/or train. Greenhouse gas emissions would be primarily attributed to the use of fossil fuels to power the equipment delivering the equipment to the site.	Related
P20 Construction on Site	The process of construction at the site will require a variety of heavy equipment, smaller power tools, cranes and generators. The operation of this equipment will have associated greenhouse gas emission from the use of fossil fuels and electricity.	Related
P21 Testing of Equipment	Equipment may need to be tested to ensure that it is operational. This may result in running the equipment using fossil fuels in order to ensure that the equipment runs properly. These activities will result in greenhouse gas emissions associated with the combustion of fossil fuels and the use of electricity.	Related
P22 Site Decommissioning	Once the facility is no longer operational, the site may need to be decommissioned. This may involve the disassembly of the equipment, demolition of on-site structures, disposal of some materials, environmental restoration, re-grading, planting or seeding, and transportation of materials off-site. Greenhouse gas emissions would be primarily attributed to the use of fossil fuels and electricity used to power equipment required to decommission the site.	Related

## 2.2 Identification of Baseline

The baseline condition for projects applying this protocol is defined as the operating conditions at the project farm prior to the change practises that result in the reduction in the slaughter age. The baseline condition would be defined as the average slaughter age at the project proponent's beef production operation for the three years prior to project implementation. This is to be confirmed by the registration of actual birth dates of all qualifying cattle under this protocol with the Canadian Cattle Identification Agency and/or an Alberta registry. The date of first calf born or season of calving for a group will not accepted for the purposes of this protocol.

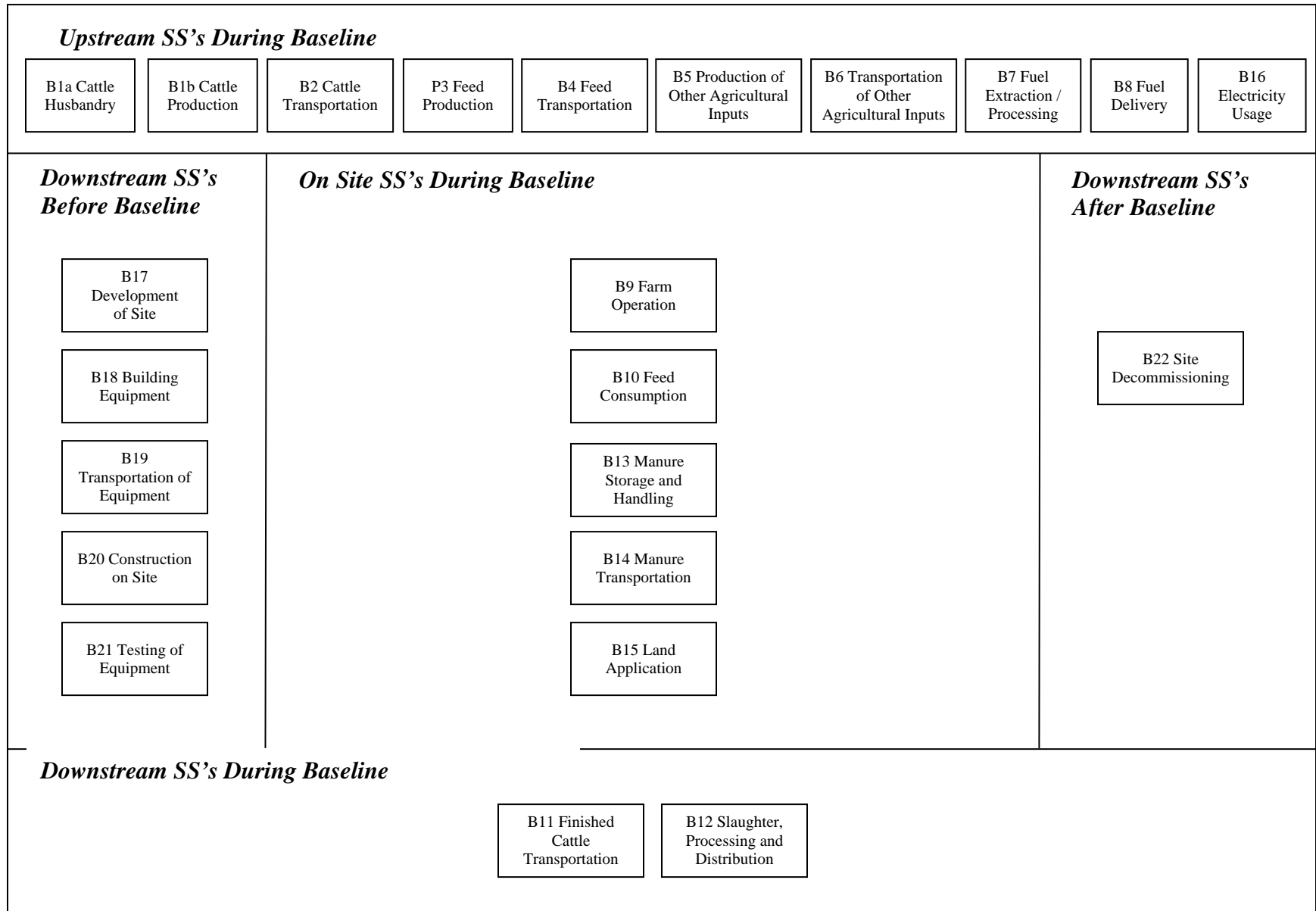
The approach to quantifying the baseline will be primarily projection based as there are suitable models for the applicable baseline condition that can provide reasonable certainty. The baseline scenario for this protocol is dynamic as the emissions profile for the baseline activities would be expected to change materially relative to the production of cattle at the project farm, and the baseline condition may vary from project to project.

The baseline condition is defined, including the relevant SS's and processes, as shown in **FIGURE 1.2**. More detail on each of these SS's is provided in Section 2.3, below.

## 2.3 Identification of SS's for the Baseline

Based on the process flow diagrams provided in **FIGURE 1.2**, the project SS's were organized into life cycle categories in **FIGURE 2.2**. Descriptions of each of the SS's and their classification as either 'controlled', 'related' or 'affected' is provided in **TABLE 2.2**.

**FIGURE 2.2: Baseline Element Life Cycle Chart**



**TABLE 2.2: Baseline SS's**

1. SS	2. Description	3. Controlled, Related or Affected
<b>Upstream SS's during Baseline Operation</b>		
B1a Cattle Production	Cattle husbandry may include insemination and all other practices prior to the birth of the calf. Quantities and types for each of the energy inputs would be contemplated to evaluate functional equivalence with the project condition.	Related
B1b Cattle Production	Cattle production may include raising calves, including time in pasture, that are input to the enterprise. Feed consumption includes the enteric emissions from the cattle and related manure production. The feed composition would need to be tracked to ensure functional equivalence with the project condition. Length of each type of feeding cycle would need to be tracked.	Related
B2 Cattle Transportation	Cattle may be transported to the project site by truck, barge and/or train. The related energy inputs for fuelling this equipment are captured under this SS, for the purposes of calculating the resulting greenhouse gas emissions. Type of equipment, number of loads and distance travelled would be used to evaluate functional equivalence with the project condition.	Related
B3 Feed Production	Feed may be produced from agricultural materials and amendments. The processing of the feed may include a number of chemical, mechanical and amendment processes. This requires several energy inputs such as natural gas, diesel and electricity. Quantities and types for each of the energy inputs would be contemplated to evaluate functional equivalence with the project condition.	Related
B4 Feed Transportation	Feed may be transported to the project site by truck, barge and/or train. The related energy inputs for fuelling this equipment are captured under this SS, for the purposes of calculating the resulting greenhouse gas emissions. Type of equipment, number of loads and distance travelled would be used to evaluate functional equivalence with the project condition.	Related
B5 Production of Other Agricultural Inputs	Other agricultural inputs, such as feed supplements, bedding, etc., may be produced from agricultural materials and amendments. The processing of the feed may include a number of chemical, mechanical and amendment processes. This requires several energy inputs such as natural gas, diesel and electricity. Quantities and types for each of the energy inputs would be contemplated to evaluate functional equivalence with the project condition.	Related
B6 Transportation of Other Agricultural Inputs	Feed may be transported to the project site by truck, barge and/or train. The related energy inputs for fuelling this equipment are captured under this SS, for the purposes of calculating the resulting greenhouse gas emissions. Type of equipment, number of loads and distance travelled would be used to evaluate functional equivalence with the project condition.	Related
B7 Fuel Extraction and Processing	Each of the fuels used throughout the on-site component of the project will need to be sourced and processed. This will allow for the calculation of the greenhouse gas emissions from the various processes involved in the production, refinement and storage of the fuels. The total volumes of fuel for each of the on-site SS's are considered under this SS. Volumes and types of fuels are the important characteristics to be tracked.	Related

B8 Fuel Delivery	Each of the fuels used throughout the on-site component of the project will need to be transported to the site. This may include shipments by tanker or by pipeline, resulting in the emissions of greenhouse gases. It is reasonable to exclude fuel sourced by taking equipment to an existing commercial fuelling station as the fuel used to take the equipment to the site is captured under other SS's and there is no other delivery.	Related
B16 Electricity Usage	Electricity may be required for operating the facility. This power may be sourced either from internal generation, connected facilities or the local electricity grid. Metering of electricity may be netted in terms of the power going to and from the grid. Quantity and source of power are the important characteristics to be tracked as they directly relate to the quantity of greenhouse gas emissions.	Related
<b>Onsite SS's during Project Operation</b>		
B9 Farm Operation	Greenhouse gas emissions may occur that are associated with the operation and maintenance of the beef production facility operations. This may include running vehicles and facilities at the project site for the distribution of the various inputs. Quantities and types for each of the energy inputs would be tracked.	Controlled
B10 Feed Consumption	Feed consumption includes the enteric emissions from the cattle and related manure production. The feed composition would need to be tracked to ensure functional equivalence with the project condition. Length of feeding cycle would need to be tracked.	Controlled
B13 Manure Storage and Handling	Greenhouse gas emissions can result from the operation of manure storage and handling facilities. This will include emissions from energy use, and from the emissions of methane and nitrous oxide from the manure being stored and processed. Quantities and types for each of the energy inputs would be tracked. Quantities, duration and conditions would also need to be tracked.	Controlled
B14 Manure Transportation	Manure may need to be transported to the field for land application from storage. Transportation equipment would be fuelled by diesel, gas or natural gas. Quantities for each of the energy inputs would be tracked to evaluate functional equivalence with the project condition.	Controlled
B15 Land Application	Manure may then be land applied. This may require the use of heavy equipment and mechanical systems. This equipment would be fuelled by diesel, gas, or natural gas resulting in GHG emissions. Other fuels may also be used in some rare cases. Quantities for each of the energy inputs would be tracked to evaluate functional equivalence with the project condition.	Controlled
<b>Downstream SS's during Project Operation</b>		
B11 Finished Cattle Transportation	Finished cattle may be transported from the project site by truck, barge and/or train. The related energy inputs for fuelling this equipment are captured under this SS, for the purposes of calculating the resulting greenhouse gas emissions. Type of equipment, number of loads and distance travelled would need to be tracked.	Related
B12 Slaughter, Processing and Distribution	Greenhouse gas emissions may occur that are associated with the slaughter, processing and distribution components downstream of the cattle finishing facility operations. This may include running vehicles and facilities at other sites. Quantities and types for each of the energy inputs would be tracked.	Related

<b>Other</b>		
B17 Development of Site	The site of the facility may need to be developed. This could include civil infrastructure such as access to electricity, gas and water supply, as well as sewer etc. This may also include clearing, grading, building access roads, etc. There will also need to be some building of structures for the facility such as storage areas, storm water drainage, offices, vent stacks, firefighting water storage lagoons, etc., as well as structures to enclose, support and house the equipment. Greenhouse gas emissions would be primarily attributed to the use of fossil fuels and electricity used to power equipment required to develop the site such as graders, backhoes, trenching machines, etc.	Related
B18 Building Equipment	Equipment may need to be built either on-site or off-site. This includes all of the components of the storage, handling, processing, combustion, air quality control, system control and safety systems. These may be sourced as pre-made standard equipment or custom built to specification. Greenhouse gas emissions would be primarily attributed to the use of fossil fuels and electricity used to power equipment for the extraction of the raw materials, processing, fabricating and assembly.	Related
B19 Transportation of Equipment	Equipment built off-site and the materials to build equipment on-site, will all need to be delivered to the site. Transportation may be completed by train, truck, by some combination, or even by courier. Greenhouse gas emissions would be primarily attributed to the use of fossil fuels to power the equipment delivering the equipment to the site.	Related
B20 Construction on Site	The process of construction at the site will require a variety of heavy equipment, smaller power tools, cranes and generators. The operation of this equipment will have associated greenhouse gas emission from the use of fossil fuels and electricity.	Related
B21 Testing of Equipment	Equipment may need to be tested to ensure that it is operational. This may result in running the equipment using fossil fuels in order to ensure that the equipment runs properly. These activities will result in greenhouse gas emissions associated with the combustion of fossil fuels and the use of electricity.	Related
B22 Site Decommissioning	Once the facility is no longer operational, the site may need to be decommissioned. This may involve the disassembly of the equipment, demolition of on-site structures, disposal of some materials, environmental restoration, re-grading, planting or seeding, and transportation of materials off-site. Greenhouse gas emissions would be primarily attributed to the use of fossil fuels and electricity used to power equipment required to decommission the site.	Related

## **2.4 Selection of Relevant Project and Baseline SS's**

Each of the SS's from the project and baseline condition were compared and evaluated as to their relevancy using the guidance provided in Annex VI of the "Guide to Quantification Methodologies and Protocols: Draft", dated March 2006 (Environment Canada). The justification for the exclusion or conditions upon which SS's may be excluded is provided in **TABLE 2.3** below. All other SS's listed previously are included.

**TABLE 2.3: Comparison of SS's**

1. Identified SS	2. Baseline (C, R, A)	3. Project (C, R, A)	4. Include or Exclude from Quantification	5. Justification for Exclusion
<b>Upstream SS's</b>				
P1a Cattle Husbandry	N/A	Related	Exclude	Excluded as animal husbandry is functionally equivalent to the baseline scenario.
B1a Cattle Husbandry	Related	N/A	Exclude	
P1b Cattle Production	N/A	Related	Include	N/A
B1b Cattle Production	Related	N/A	Include	
P2 Cattle Transportation	N/A	Related	Exclude	Excluded as the emissions from transportation are likely functionally equivalent to the baseline scenario.
B2 Cattle Transportation	Related	N/A	Exclude	
P3 Feed Production	N/A	Related	Exclude	Excluded as upstream production of other agricultural inputs are not impacted by the implementation of the project and as such the baseline and project conditions will be functionally equivalent.
B3 Feed Production	Related	N/A	Exclude	
P4 Feed Transportation	N/A	Related	Exclude	Excluded as the emissions from transportation are likely functionally equivalent to the baseline scenario.
B4 Feed Transportation	Related	N/A	Exclude	
P5 Production of Other Agricultural Inputs	N/A	Related	Exclude	Excluded as upstream production of other agricultural inputs are not impacted by the implementation of the project and as such the baseline and project conditions will be functionally equivalent.
B5 Production of Other Agricultural Inputs	Related	N/A	Exclude	
P6 Transportation of Other Agricultural Inputs	N/A	Related	Exclude	Excluded as the emissions from transportation are likely functionally equivalent to the baseline scenario.
B6 Transportation of Other Agricultural Inputs	Related	N/A	Exclude	
P7 Fuel Extraction and Processing	N/A	Related	Exclude	Excluded as these SS's are not relevant to the project as the emissions from these practises are covered under proposed greenhouse gas regulations.
B7 Fuel Extraction and Processing	Related	N/A	Exclude	
P8 Fuel Delivery	N/A	Related	Exclude	Excluded as these SS's are not relevant to the project as the emissions from these practises are covered under proposed greenhouse gas regulations.
B8 Fuel Delivery	Related	N/A	Exclude	
P16 Electricity Usage	N/A	Related	Exclude	Excluded as these SS's are not relevant to the project as the emissions from these practises are covered under proposed greenhouse gas regulations.
B16 Electricity Usage	Related	N/A	Exclude	
<b>Onsite SS's</b>				
P9 Farm Operation	N/A	Controlled	Exclude	Excluded as beef production is not impacted by the implementation of the project and as such the baseline and project conditions will be functionally equivalent.
B9 Farm Operation	Controlled	N/A	Exclude	

P10 Feed Consumption	N/A	Controlled	Include	N/A
B10 Feed Consumption	Controlled	N/A	Include	
P13 Manure Storage and Handling	N/A	Controlled	Include	N/A
B13 Manure Storage and Handling	Controlled	N/A	Include	
P14 Manure Transportation	N/A	Controlled	Exclude	Excluded as the emissions from transportation are likely functionally equivalent to the baseline scenario.
B14 Manure Transportation	Controlled	N/A	Exclude	
P15 Land Application	N/A	Controlled	Include	N/A
B15 Land Application	Controlled	N/A	Include	
<b>Downstream SS's</b>				
P11 Finished Cattle Transportation	N/A	Related	Exclude	Excluded as the emissions from transportation are likely functionally equivalent to the baseline scenario.
B11 Finished Cattle Transportation	Related	N/A	Exclude	
P12 Slaughter, Processing and Distribution	N/A	Related	Exclude	Excluded as the emissions from slaughter, processing and distribution are likely functionally equivalent to the baseline scenario.
B12 Slaughter, Processing and Distribution	Related	N/A	Exclude	
<b>Other</b>				
P17 Development of Site	N/A	Related	Exclude	Emissions from site development are not material given the long project life, and the minimal site development typically required.
B17 Development of Site	Related	N/A	Exclude	Emissions from site development are not material for the baseline condition given the minimal site development typically required.
P18 Building Equipment	N/A	Related	Exclude	Emissions from building equipment are not material given the long project life, and the minimal building equipment typically required.
B18 Building Equipment	Related	N/A	Exclude	Emissions from building equipment are not material for the baseline condition given the minimal building equipment typically required.
P19 Transportation of Equipment	N/A	Related	Exclude	Emissions from transportation of equipment are not material given the long project life, and the minimal transportation of equipment typically required.
B19 Transportation of Equipment	Related	N/A	Exclude	Emissions from transportation of equipment are not material for the baseline condition given the minimal transportation of equipment typically required.
P20 Construction on Site	N/A	Related	Exclude	Emissions from construction on site are not material given the long project life, and the minimal construction on site typically required.
B20 Construction on Site	Related	N/A	Exclude	Emissions from construction on site are not material for the baseline condition given the minimal construction on site typically required.

P21 Testing of Equipment	N/A	Related	Exclude	Emissions from testing of equipment are not material given the long project life, and the minimal testing of equipment typically required.
B21 Testing of Equipment	Related	N/A	Exclude	Emissions from testing of equipment are not material for the baseline condition given the minimal testing of equipment typically required.
P22 Site Decommissioning	N/A	Related	Exclude	Emissions from decommissioning are not material given the long project life, and the minimal decommissioning typically required.
B22 Site Decommissioning	Related	N/A	Exclude	Emissions from decommissioning are not material for the baseline condition given the minimal decommissioning typically required.

## 2.5 Quantification of Reductions, Removals and Reversals of Relevant SS's

### 2.5.1 Quantification Approaches

Quantification of the reductions, removals and reversals of relevant SS's for each of the greenhouse gases will be completed using the methodologies outlined in **TABLE 2.4**, below. A listing of relevant emission factors is provided in **Appendix A**. These calculation methodologies serve to complete the following three equations for calculating the emission reductions from the comparison of the baseline and project conditions.

$$\text{Emission Reduction} = \text{Emissions}_{\text{Baseline}} - \text{Emissions}_{\text{Project}}$$

$$\text{Emissions}_{\text{Baseline}} = \text{Emissions}_{\text{Cattle}} + \text{Emissions}_{\text{Manure}}$$

$$\text{Emissions}_{\text{Project}} = \text{Emissions}_{\text{Cattle}} + \text{Emissions}_{\text{Manure}}$$

Where:

$\text{Emissions}_{\text{Baseline}}$  = sum of the emissions under the baseline condition.

$\text{Emissions}_{\text{Cattle}}$  = emissions under SS B1b Cattle Production and B10 Feed Consumption

$\text{Emissions}_{\text{Manure}}$  = emissions under SS B13 Manure Storage and Handling and B15 land Application

$\text{Emissions}_{\text{Project}}$  = sum of the emissions under the project condition.

$\text{Emissions}_{\text{Cattle}}$  = emissions under SS P1b Cattle Production and P10 Feed Consumption

$\text{Emissions}_{\text{Manure}}$  = emissions under SS P13 Manure Storage and Handling and P15 land Application

**TABLE 2.4: Quantification Procedures**

1.0 Project/ Baseline SS	2. Parameter / Variable	3. Unit	4. Measured / Estimated	5. Method	6. Frequency	7. Justify measurement or estimation and frequency
<b>Project SS's</b>						
P1b Cattle Production and P10 Feed Consumption	$Emissions_{Cattle} = EF_{Enteric} * Mass_{Production}$					
	Enteric Emissions from Cattle / Emissions <sub>Cattle</sub>	kg CH <sub>4</sub>	N/A	N/A	N/A	Quantity being calculated.
	Mass of Cattle Produced / Mass Production	kg beef	Measured	Direct measurement of kg of beef produced.	Monthly	Direct measurement is the highest level possible.
	Enteric Emission Factor / EF <sub>Enteric</sub>	kg CH <sub>4</sub> / kg beef	Estimated	From data tables provided in Appendix A or other applicable source.	N/A	Reference values may be adjusted periodically based on availability of updated data.
P13 Manure Storage and P15 Land Application	$Emissions_{Manure} = (EF_{Manure_{N2O}} * Mass_{Production}); (EF_{Manure_{CH4}} * Mass_{Production})$					
	Emissions from Manure Handling, Storage and Land Application / Emissions <sub>Manure</sub>	kg N <sub>2</sub> O; kg CH <sub>4</sub>	N/A	N/A	N/A	Quantity being calculated.
	Mass of Cattle Produced / Mass Production	kg beef	Measured	Direct measurement of kg of beef produced.	Monthly	Direct measurement is the highest level possible.
	Emission Factor for Manure Handling, Storage and Land Application / EF <sub>Manure<sub>CH4</sub></sub>	kg CH <sub>4</sub> / kg beef	Estimated	From data tables provided in Appendix A or other applicable source.	N/A	Reference values may be adjusted periodically based on availability of updated data.
	Emission Factor for Manure Handling, Storage and Land Application / EF <sub>Manure<sub>N2O</sub></sub>	kg N <sub>2</sub> O / kg beef	Estimated	From data tables provided in Appendix A or other applicable source.	N/A	Reference values may be adjusted periodically based on availability of updated data.

Baseline SS's						
B1b Cattle Production and B10 Feed Consumption	Emissions <sub>Cattle</sub> = EF <sub>Enteric</sub> * Mass <sub>Production</sub>					
	Enteric Emissions from Cattle / Emissions <sub>Cattle</sub>	kg CH <sub>4</sub>	N/A	N/A	N/A	Quantity being calculated.
	Mass of Cattle Produced / Mass <sub>Production</sub>	kg beef	Measured	Direct measurement of kg of beef produced.	Monthly	Direct measurement is the highest level possible.
	Enteric Emission Factor / EF <sub>Enteric</sub>	kg CH <sub>4</sub> / kg beef	Estimated	From data tables provided in Appendix A or other applicable source.	N/A	Reference values may be adjusted periodically based on availability of updated data.
B13 Manure Storage and P15 Land Application	Emissions <sub>Manure</sub> = (EF <sub>Manure N2O</sub> * Mass <sub>Production</sub> ); (EF <sub>Manure CH4</sub> * Mass <sub>Production</sub> )					
	Emissions from Manure Handling, Storage and Land Application / Emissions <sub>Manure</sub>	kg N <sub>2</sub> O; kg CH <sub>4</sub>	N/A	N/A	N/A	Quantity being calculated.
	Mass of Cattle Produced / Mass <sub>Production</sub>	kg beef	Measured	Direct measurement of kg of beef produced.	Monthly	Direct measurement is the highest level possible.
	Emission Factor for Manure Handling, Storage and Land Application / EF <sub>Manure iCH4</sub>	kg CH <sub>4</sub> / kg beef	Estimated	From data tables provided in Appendix A or other applicable source.	N/A	Reference values may be adjusted periodically based on availability of updated data.
	Emission Factor for Manure Handling, Storage and Land Application / EF <sub>Manure iN2O</sub>	kg N <sub>2</sub> O / kg beef	Estimated	From data tables provided in Appendix A or other applicable source.	N/A	Reference values may be adjusted periodically based on availability of updated data.

### **2.5.2. Contingent Data Approaches**

Contingent means for calculating or estimating the required data for the equations outlined in section 2.5.1 are summarized in **TABLE 2.5**, below.

## **2.6 Management of Data Quality**

In general, data quality management must include sufficient data capture such that the mass and energy balances may be easily performed with the need for minimal assumptions and use of contingency procedures. The data should be of sufficient quality to fulfill the quantification requirements and be substantiated by company records for the purpose of verification.

The project proponent shall establish and apply quality management procedures to manage data and information. Written procedures should be established for each measurement task outlining responsibility, timing and record location requirements. The greater the rigour of the management system for the data, the more easily an audit will be to conduct for the project.

### **2.6.1 Record Keeping**

Record keeping practises should include:

- a. Electronic recording of values of logged primary parameters for each measurement interval;
- b. Printing of monthly back-up hard copies of all logged data;
- c. Written logs of operations and maintenance of the project system including notation of all shut-downs, start-ups and process adjustments;
- d. Retention of copies of logs and all logged data for a period of 7 years; and
- e. Keeping all records available for review by a verification body.

### **2.6.1 Quality Assurance/Quality Control (QA/QC)**

QA/QC can also be applied to add confidence that all measurements and calculations have been made correctly. These include, but are not limited to:

- a Protecting monitoring equipment (sealed meters and data loggers);
- b Protecting records of monitored data (hard copy and electronic storage);
- c Checking data integrity on a regular and periodic basis (manual assessment, comparing redundant metered data, and detection of outstanding data/records);
- d Comparing current estimates with previous estimates as a ‘reality check’;
- e Provide sufficient training to operators to perform maintenance and calibration of monitoring devices;

- f Establish minimum experience and requirements for operators in charge of project and monitoring; and
- g Performing recalculations to make sure no mathematical errors have been made.

**TABLE 2.5: Contingent Data Collection Procedures**

1.0 Project / Baseline SS	2. Parameter / Variable	3. Unit	4. Measured / Estimated	5. Contingency Method	6. Frequency	7. Justify measurement or estimation and frequency
<b>Project SS's</b>						
P1b Cattle Production and P10 Feed Consumption	Mass of Cattle Produced / Mass <small>Production</small>	kg beef	Estimated	Estimation based on number of head of cattle brought to slaughter and average weight for most recent period.	Monthly	Provides a reasonable estimate for the given period.
P13 Manure Storage and P15 Land Application	Mass of Cattle Produced / Mass <small>Production</small>	kg beef	Estimated	Estimation based on number of head of cattle brought to slaughter and average weight for most recent period.	Monthly	Provides a reasonable estimate for the given period.
<b>Baseline SS's</b>						
P1b Cattle Production and P10 Feed Consumption	Mass of Cattle Produced / Mass <small>Production</small>	kg beef	Estimated	Estimation based on number of head of cattle brought to slaughter and average weight for most recent period.	Monthly	Provides a reasonable estimate for the given period.
P13 Manure Storage and P15 Land Application	Mass of Cattle Produced / Mass <small>Production</small>	kg beef	Estimated	Estimation based on number of head of cattle brought to slaughter and average weight for most recent period.	Monthly	Provides a reasonable estimate for the given period.

**APPENDIX A:**  
**Relevant Emission Factors**

**TABLE A1: Emissions Factors Based on Slaughter Age**

Emissions Factor	Slaughter Age (Months)				Equation <sup>2,3</sup>	R <sup>2</sup>
	12 <sup>1</sup>	14 <sup>1</sup>	18 <sup>1</sup>	21 <sup>1</sup>		
EF Enteric <sub>CH4</sub>	0.43	0.47	0.68	0.86	$y = 0.162 e^{0.079 x}$	0.9931
EF Manure <sub>N2O</sub>	0.0062	0.0090	0.0135	0.0249	$y = 0.0011 e^{0.1464 x}$	0.9791
EF Manure <sub>CH4</sub>	0.0038	0.0048	0.0104	0.0161	$y = 0.0005 e^{0.1659 x}$	0.9935

<sup>1</sup> Emission factors developed for each of these slaughter age scenarios as part of the work completed by the Beef Technical Working Group under the NOQT. The calculation of these emission factors follows the guidance from IPCC (tier 2) and is based on the feeding regimes provided in TABLE A.2.

<sup>2</sup> Equations represent best fits with the data from the analysis ensuring that the interpolation by the use equations represented a conservative approach and reflected the likely variances around the data points.

<sup>3</sup> For the equations, 'x' represents the average age of cattle at slaughter in months.

**TABLE A2: Number of Days per Feeding Regime based on Slaughter Age**

Feeding Regime <sup>1</sup>	Slaughter Age			
	12	14	18	21
100% milk	91	91	91	91
56.6 : 43.0%, forage : milk	31	92	92	92
40 : 60% silage, concentrate (DM basis)	31	31	0	0
100% barley silage (DM basis)	0	0	212	212
grass, legume pasture	0	0	0	153
17% : 80% : 3%, silage : barley : supplements (DM basis)	212	212	153	92

<sup>1</sup> DM represents dry matter basis.